



CHAQUETA POLAR

POLAR FLEECE JACKET

Characteristics:

- Central zip closure with chin guard.
- Elastic cuffs.
- Two reflective tapes on the torso and sleeves.
- Adjustable hem with drawcord and cord stoppers.
- 3 pockets: 1 on the right chest and 2 lower pockets, all with zip closure.

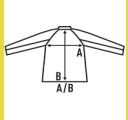
Certified to EN ISO 20471 for 25 wash cycles, class I - Two-tone

Certified to EN ISO 20471 for 25 wash cycles, class II - Fluorescent

100% polyester. Weight: 280 g/m²



Box/Box 15 uds.



SIZE/Size

EU	XS	S	M	L	XL	XXL	3XL	4XL	5XL
Width	48 cm	52 cm	56 cm	60 cm	64 cm	68 cm	71 cm	75 cm	78 cm
Länge	67 cm	68 cm	70 cm	72 cm	74 cm	76 cm	78 cm	80 cm	82 cm



Orange Fluor
(ORF)



Gold Fluor
(SYF)



Navy - SunYellow Fluor
(NYSYF)



Navy - Orange Fluor
(NYORF)



Bicolor



Fluor



EN ISO 13688

