



CHAQUETA SOFTSHELL

SOFTSHELL JACKET

Characteristics:

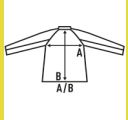
- Central zip closure.
- Adjustable cuffs with hook-and-loop fastening.
- Reverse zippers.
- Segmented reflective tapes, heat-sealed on the torso, shoulders and sleeves.
- Adjustable hem with drawcord and cord stoppers.
- 5 pockets: 1 on the right chest and 2 lower pockets with zip closure. 2 inner pockets.
- Fluor color: placket with hook-and-loop fastening and chin guard.

Certified to EN ISO 20471 for 25 wash cycles, class II

Three-layer fabric. 100% polyester. Weight: 320 g/m²



Box/Box 15 uds.



SIZE/Size

| EU | XS | S | M | L | XL | 2XL | 3XL | 4XL | 5XL |
|-------|-------|-------|-------|-------|-------|-------|-------|-------|-------|
| Width | 47 cm | 51 cm | 55 cm | 59 cm | 63 cm | 67 cm | 71 cm | 75 cm | 79 cm |
| Länge | 70 cm | 71 cm | 73 cm | 74 cm | 75 cm | 77 cm | 78 cm | 80 cm | 81 cm |


Orange Fluor
(ORF)


Gold Fluor
(SYF)


Navy - SunYellow Fluor
(NYSYF)


Navy - Orange Fluor
(NYORF)

