



CHAQUETA POLAR

POLAR FLEECE JACKET

Characteristics:

- Central zip closure with chin guard.
- Elastic cuffs.
- Two reflective tapes on the torso and sleeves.
- Adjustable hem with drawcord and cord stoppers.
- 3 pockets: 1 on the right chest and 2 lower pockets, all with zip closure.

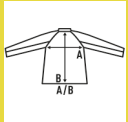
Certified to EN ISO 20471 for 25 wash cycles, class I - Two-tone

Certified to EN ISO 20471 for 25 wash cycles, class II - Fluorescent

100% polyester. Weight: 280 g/m²



Box 15 uds.



SIZE

EU	XS	S	M	L	XL	XXL	3XL	4XL	5XL
Width	48 cm 18.9"	52 cm 20.5"	56 cm 22"	60 cm 23.6"	64 cm 25.2"	68 cm 26.8"	71 cm 28"	75 cm 29.5"	78 cm 30.7"
Length	67 cm 26.4"	68 cm 26.8"	70 cm 27.6"	72 cm 28.3"	74 cm 29.1"	76 cm 29.9"	78 cm 30.7"	80 cm 31.5"	82 cm 32.3"



Orange Fluor
(ORF)



Gold Fluor
(SYF)



Navy - SunYellow Fluor
(NYSYF)



Navy - Orange Fluor
(NYORF)



Bicolor



Fluor



EN ISO 13688

