



KID SWEAT PANTS FRENCH TERRY

Kid's plush jogger pants, with side pockets, cuffs on the hem and elastic waist with adjustable drawstring.

Details:

- Elastic waistband with matching drawcord.
- French terry.
- Hand pockets.
- Elastic cuff at the hem.

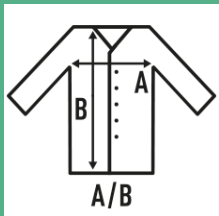
60% Cotton / 40% recycled Polyester 235/240 g/m2 approx.



Box 25



Pack 25



SIZE

EU	1-2	3-4	5-6	7-8	9-11	12-14
Width	28 cm 11"	30 cm 11.8"	33 cm 13"	35 cm 13.8"	37 cm 14.6"	39 cm 15.4"
Length	40 cm 15.7"	52 cm 20.5"	60 cm 23.6"	68 cm 26.8"	75 cm 29.5"	85 cm 33.5"



Navy
(NY)



Grey Melange
(GM)

NEW COLORS



BK
Black



RD
Red



RB
Royal Blue